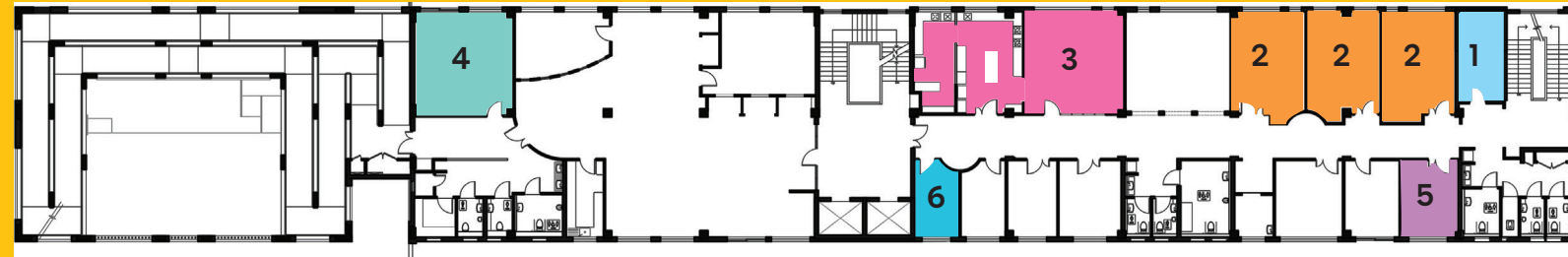




Near Hotel Sun Park Inn, ITBP Road  
P.O. Kanwali, Dehradun 248 001  
Uttarakhand, India  
latikaroy.org | 843 9000 110



## SECOND FLOOR

### GROWING INTO INDEPENDENCE

- 1. Studio** Our in-house media space, where we'll record podcasts, edit films and photographs, to tell our stories and inspire the world.
- 2. Training Labs** Where young disabled adults learn self care, social and job skills.
- 3. Adda, Rasoi** At Adda, India's first dedicated club exclusively for disabled adults of all ages, our members relax, have fun, order snacks, and hang out with friends. Club members benefit from fresh cooked food in the training kitchen, along with coffee, juices and baked goods prepared primarily by the Latika trainees.
- 4. Paula Hughes Training Room** Paula Hughes was a visionary trainer. A volunteer for 12 years, she shaped who we are today.
- 5. Room Of Requirement** Here's a room that morphs into whatever's needed in the moment. Set up today for hospitality training (making beds, folding towels, organizing rooms), it could shapeshift into a rest space, nap room, or quiet retreat tomorrow.
- 6. Salon** India's first sensory-friendly salon for people who find haircuts overwhelming. Also a training space to skill disabled young adults in salon services. Cuts for kids, manicures for moms, work opportunities, all in one place.

## TERRACE

### THE SKY'S THE LIMIT

One day soon, our terrace may become a cafe, an open-air theatre or a concert venue.

## LOVE AND GRATITUDE

### EVERY BRICK A GIFT

Azim Premji Foundation  
Table Space  
H T Parekh Foundation  
Max India Foundation  
Cushman & Wakefield  
SBI Foundation  
Wipro  
Nuvama  
Salesforce  
Dixon Technologies  
TA Foundation

Advanced Tech Consulting Service  
Nucleus Office Parks  
Hab Pharma  
Rohini Nilekani Philanthropies Foundation  
Nykaa Foundation  
A.T.E. Chandra Foundation  
Sunil Vachani  
Rati Forbes  
Anshul and Ritu Jain  
Give Foundation

Designed for Dignity,  
Built for Belonging



Project Management  
Principal Architect  
Turnkey Contractor  
Structure Consultant  
MEP Consultant  
Universal Design Consultants  
Library  
Landscape and Playground  
Solar Partner

Cushman & Wakefield  
Pradeep Sachdeva Design Associates  
Parag Technobuild  
Arvind Gupta Consultants  
KRIM Engineering Services  
Subhash Chandra Vashishth, Nandini Bhandari  
Bookworm, Sujata Noronha  
Salil Das  
Fourth Partner Energy



embrace your difference

## WELCOME TO LATIKA!



Our building is a labor of love, the culmination of years of meticulous planning. Envisioned as a great place to work as much as to demonstrate how we work, every room, corner, and corridor's been shaped by years of listening – to children, parents, therapists and teachers, architects, accessibility experts, and our community – so that everyone feels safe, productive and welcome.

Our design choices reflect our belief that everyone matters. You'll notice art where you wouldn't expect it and spaces that invite pause. At the entrance, you'll meet the Parliament of Owls, a gift from our architect. Listening hard, seeing clearly, and responding precisely, owls are creatures of attention. Much like our building.

### THE PLAYGROUND

#### A WHALE OF A TIME

An extension of our chaupal with lots of seating for parents and friends, and a variety of play equipment that children of all ages, stages and abilities can enjoy.

### THE RAMP

#### MOVEMENT AS EXPERIENCE

Our wide ramp connects every floor with a gentle 1:20 slope that makes walking and wheeling easy. Designed wide and social, it's a place to walk, talk, rest, and gather.

### THE CHAUPAL

#### OUR OWN VILLAGE PIAZZA

A space for music, stories, poetry, morning walks with neighbors, and everyday encounters. What you see changes as you move: a reminder that perspectives do too.

### DRIVER'S ADDA

#### SAFETY AND COMFORT, TO, FROM AND IN-BETWEEN

Where our driver *bhaiyyas* can rest and hang out in air-conditioned comfort between driving our students and trainees safely to and from school.



### GROUND FLOOR

#### WHERE FAMILIES ARRIVE, PAUSE, CONNECT, AND BEGIN

- 1. Library** A welcoming space for children, families, and teachers, with stories that appeal to readers of all ages and stages.
- 2. Wide Corridors and Transition Spaces** Not just Building Code compliant, our passageways are spaces for conversation, play, rest and thinking.
- 3. Jaanch, Family University** Sound-proof rooms for hearing and vision testing; labs for family-centered learning.
- 4. Counseling Rooms, Legal Room** Private conversations, guidance and support, both emotional and practical, keep families at the center.
- 5. Tatkal** Where parents can immediately enroll in structured training to care for their disabled child. No waiting list!
- 6. Little Loos** Two child-sized toilets that small kids can use independently, safely and comfortably.
- 7. Art Room/ Latika Vihar** A place for expression, mess, and making. Creativity begins with freedom.

- 8. Nanhe** A space of care, stimulation and calm for our youngest children.
- 9. Sensory Room** A room for *all of us* to stimulate, regulate, and realign. (We all have senses!)
- 10. Wabi Sabi, Bania ki Dukaan (central store), Benches, Art** Thoughtful spaces that promote inclusion and invite everyday interactions, imagination, and delight.

### FIRST FLOOR

#### WHERE FAMILIES LEARN, OBSERVE AND SHARE

- 1. Latika School Classrooms** Rooms that offer focus, flexibility, and comfort for students with a myriad of learning styles.
- 2. Observation Room** An observation room connected to classrooms, allowing visitors to watch and learn without intruding.
- 3. Multipurpose Area** Left open by design, following a simple question: What does this space want to be?
- 4. Changing Places Toilet** To enable children and adults with higher physical support needs to change in comfort and dignity.
- 5. Quiet Sensory Room, Staff Room** Rest and regulation matter for everyone!

